

# Miro 16

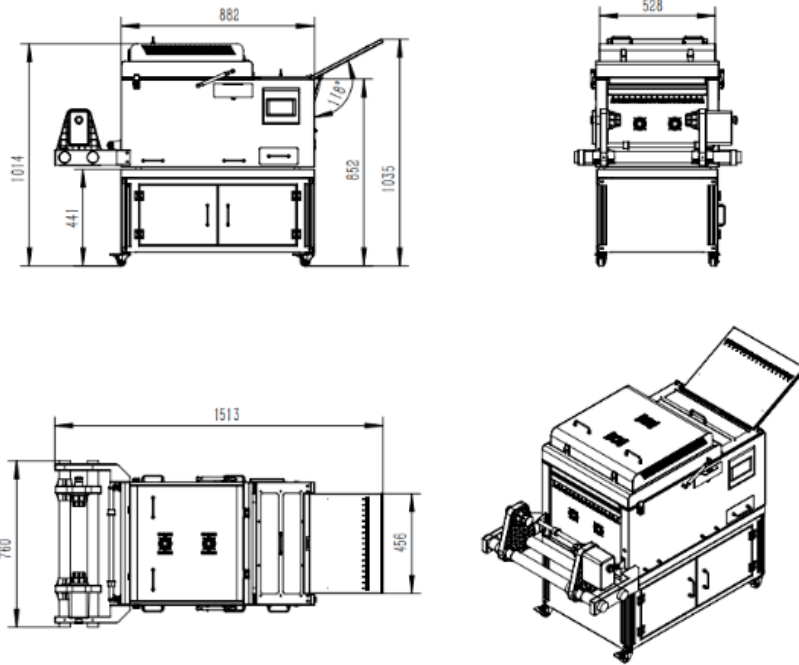
## Manual



## Powder Shaking Safety Instructions

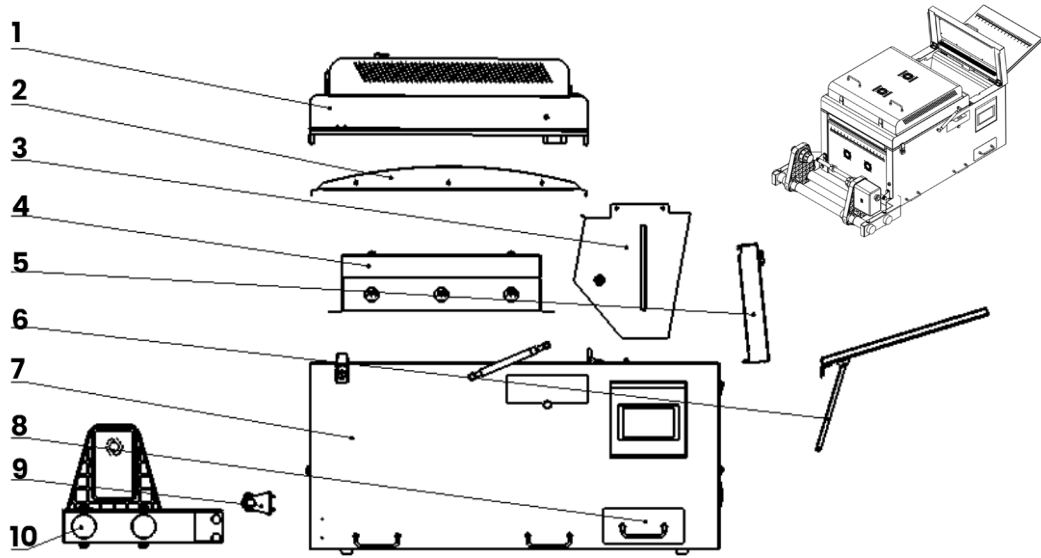
1. Use the Powder Shaking Machine only for its intended purpose.
2. To reduce the risk of electric shock, do not immerse the smoke purifier in water or other liquids.
3. Never pull the cord to unplug the device; grasp the plug and pull to disconnect.
4. Do not operate the smoke purifier if the cord is damaged, if the unit has been dropped, or if it is otherwise damaged. To minimize the risk of electric shock, do not disassemble or attempt to repair the device. Have it examined and repaired by a qualified technician. Improper assembly or repair may increase the risk of fire, electric shock, or injury during use.
5. This appliance is not intended for use by individuals (including children) with limited physical, sensory, or cognitive abilities, or insufficient experience or knowledge, unless they are supervised or instructed on its use by a responsible person.
6. When used near or by children, close supervision is required. Never leave the device unattended while it is plugged in.
7. Avoid using other high-power devices on the same electrical circuit to prevent overload.
8. Do not plug the power cord directly into a wall outlet; use a power strip to regulate voltage.
9. If an extension cord is required, use a 20-ampere-rated cord. Cords with lower amperage ratings may overheat. Position the cord carefully to avoid tripping hazards or accidental pulling.

## Technical Parameters



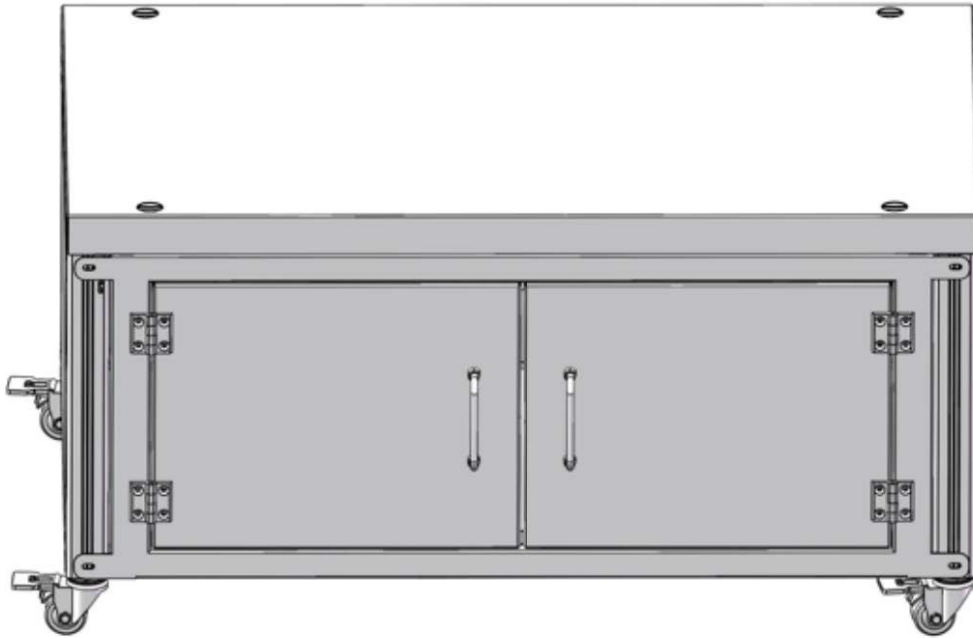
Model	Miro 16	
Power	1400W, <b>12.72A,110V</b>	1400W, <b>6.36A,220V</b>
Machine Size	61.38"×29.92"×22.60" (155.9x76x57.4cm)	61.38"×29.92"×22.60" (155.9x76x57.4cm)
Packing Size	39.76"×32.28"×37.01" (101*82*94cm)	39.76"×32.28"×37.01" (101*82*94cm)
Packing Weight	Shaker: 330.69 lbs (150 kg) PrintPro Table 50.71 lbs(23kg)	Shaker: 330.69 lbs (150 kg) PrintPro Table 50.71 lbs(23kg)
Certificate	CE,FCC	
Warranty	One year except for filter board	

## Exploded View Diagram

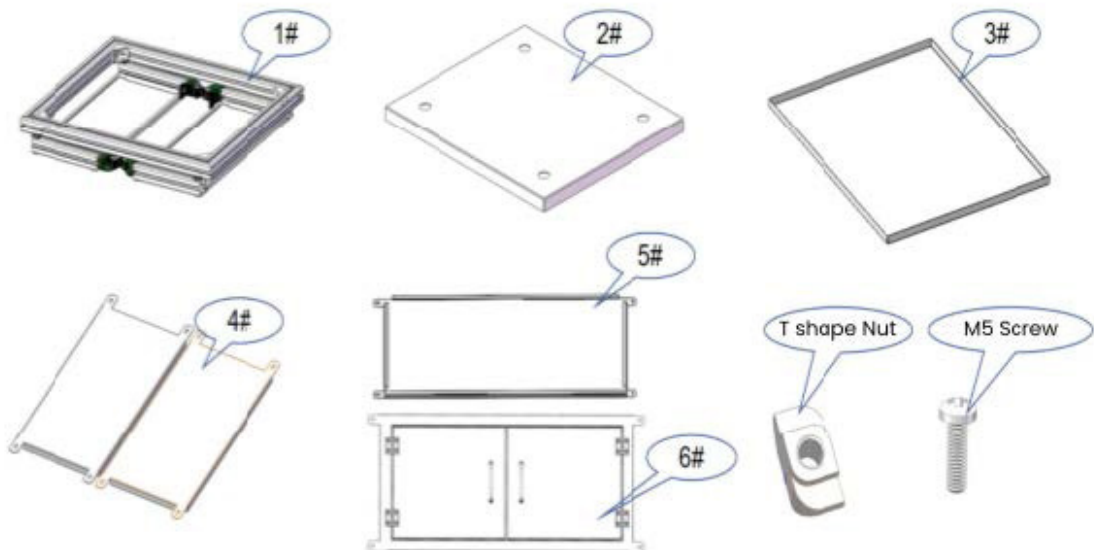


No.	Description	Qty
1	Purifier System Assembly	1
2	Main Heating Plate	1
3	Shaker Part Assembly	1
4	Electrical Part Assembly	1
5	Powder Collecting Box Assembly	1
6	Front Heating Plate Assembly	1
7	Main Box Assembly	1
8	Bottom Powder Collecting Box Assembly	1
9	Tension Bar Assembly	1
10	Take Up Reel Assembly	1

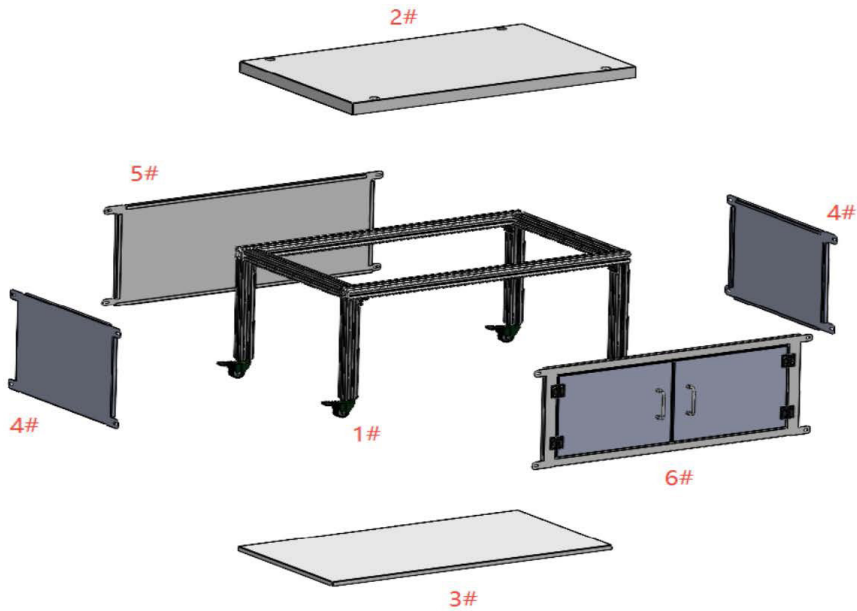
## Print Pro Table Installation



### What is inside



## Installation Guide



No.	Description	Qty	Screw	Qty
1	Frame of the Table	1		
2	Top Panel	1		
3	Bottom Panel	1		
4	Left & Right Side Panel	2	T Shape Nut	8
			M5 Screw	8
5	Backside Panel	1	T Shape Nut	8
			M5 Screw	8
6	Door	1	T Shape Nut	8
			M5 Screw	8